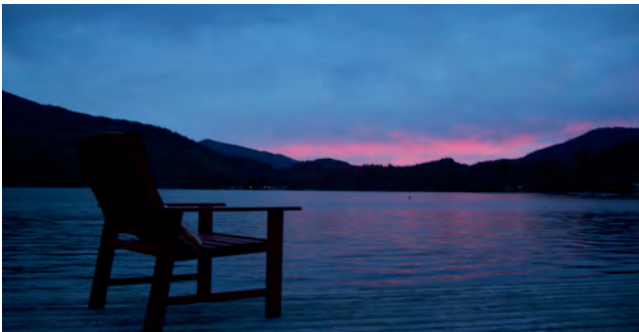


Little bit of photo's @ information about our area, Enjoy!



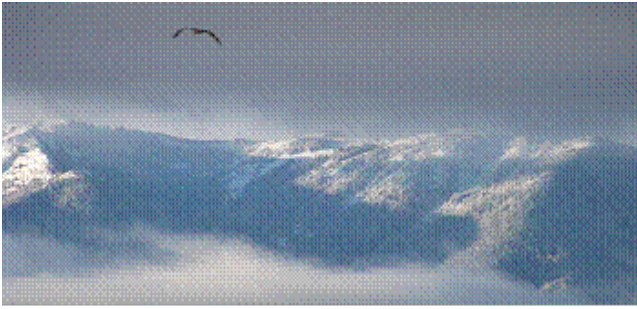
Lake Crescent is glacier fed, now mostly owned by the park, few private residents. No jetskis & a catch and release lake. Enjoy the crystal clear water where you can see for 100ft down.. Lake Crescent has 22 miles of shoreline. Camping or staying on this lake see:
www.lakecrescentcabin.com, www.logcabinresort.net or
www.hikecentral.com/campgrounds/118469.html



Lake Sutherland used to be attached to Lake Crescent but now is separate thanks to a land slide many years ago, this lake raises and falls depending on rainfall. It is much shallower & warmer and a much smaller than Crescent . Don't miss it, it is on your left before Lake Crescent when going west from Port Angeles. Mostly private owned cabins but some rentals. This lake does have a water ski course.



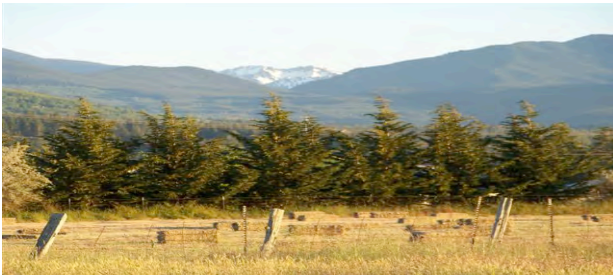
Enjoy the beauty of the nature, here is a photo of a young fawn eating the grass while we are 20feet away. See lots of wildlife in the Olympic National Park Learn more :
<http://www.nps.gov/olymp/playourvisit> or www.NationalParkReservations.com



Here is a photo of the lightly covered mountains, with a crow in flight. The Olympic are great hiking area, you can take short day hikes to days of hiking through all the valleys. See: http://gorp.away.com/gorp/resource/us_national_park/wa/hik_oly.htm
For maps, directions, & distance of hikes!



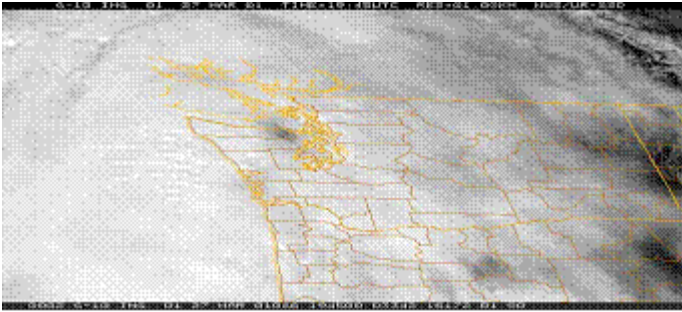
Photo was taken at Pillar Point, off of Highway 112. Clallam county has areas to pull over or parks to walk down to the Strait to see lots of sea life. Sequim is where the Dungeness Crab come from. You can set crab pots and catch them yourself. We have lots of other sea fish like halibut, salmon, shrimp, razor clams, mussels & you will see lots of sea life like seals, whales, starfish .



This is a photo of Cameron Ridge. Clallam County is an area that you can have flat land for farming, horses, or your dream home. Have trees around you for privacy but still have a view of the Olympics or the Strait of Juan de Fuca in some cases both views. Maybe even view of Mt. Baker or Mt. Walker.



Backyard photo's



This is a news photo of how it can be raining or cloudy everywhere around Sequim, but Sequim has a blue Sky! Sequim is said to be in a blue hole! Because of this Sequim has been named one of the top places to retire near water. Sequim Average rainfall is 15 inches a year compared to 2 hours west in Forks or the rainforest where they get 120 inches a year!



Another photo of Lake Crescent from Fairholme a camping spot looking back into valley.



This is a photo of a beautiful night, photo was taken from our office doorstep!
Thanks to Jane!\



Red Sky usually means tomorrow is going to be nice!

Come explore for yourself, stop by let us show you some of the best parts of this area. We can show you houses or land so you can full fill your dream home. Maybe with a view! We are located at the North-Western tip of the United States, just a short ferry ride to Canada. A couple hours from Seattle. Not to far away for shopping trips but far enough away from the big city.

*Hope you have enjoyed the photos &
information!*

*Wendy Burwell, owner, secretary &
wife of broker!*

Secretary@olympen.com

*360-683-4122 & 1-800-814-
4122*